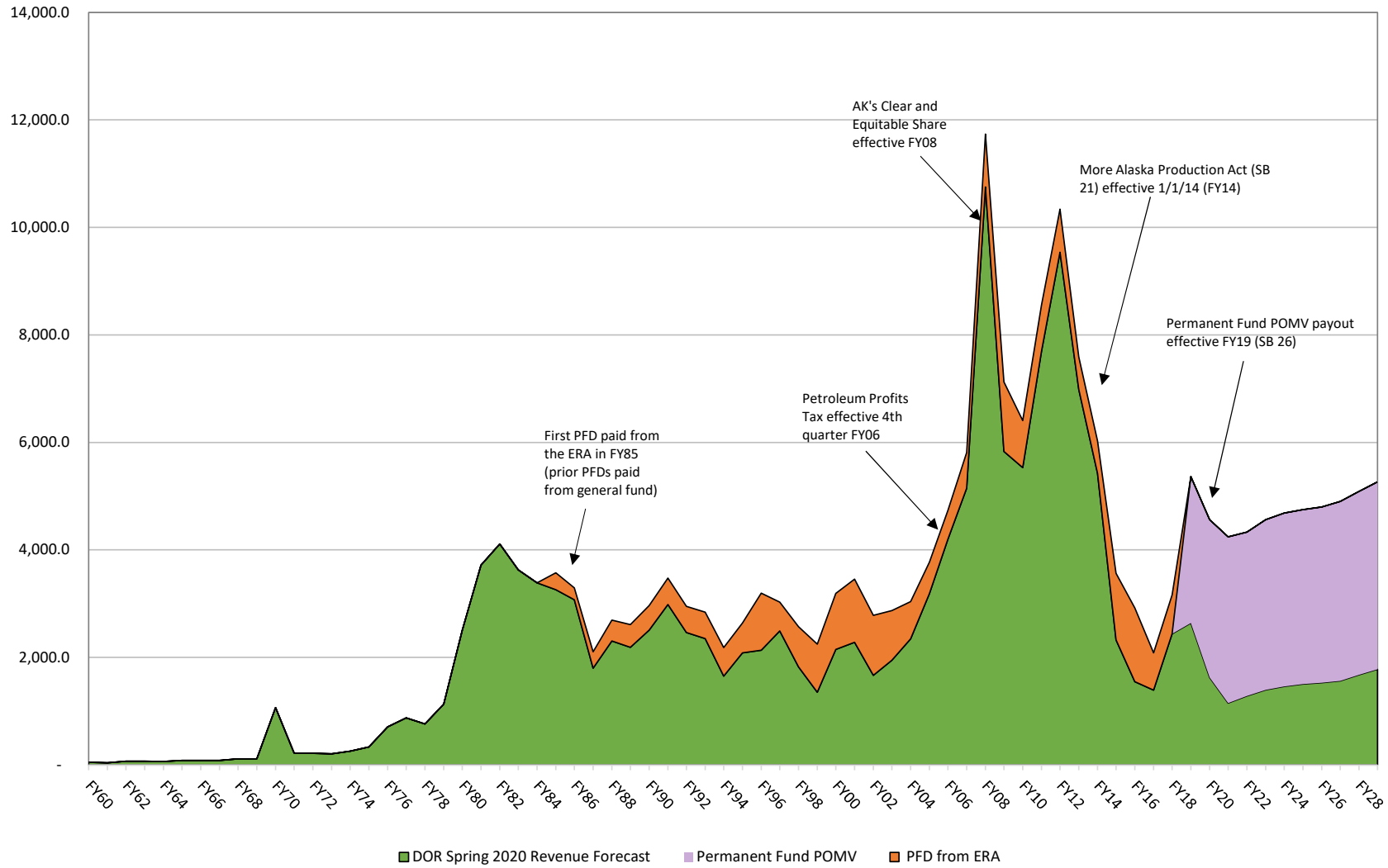
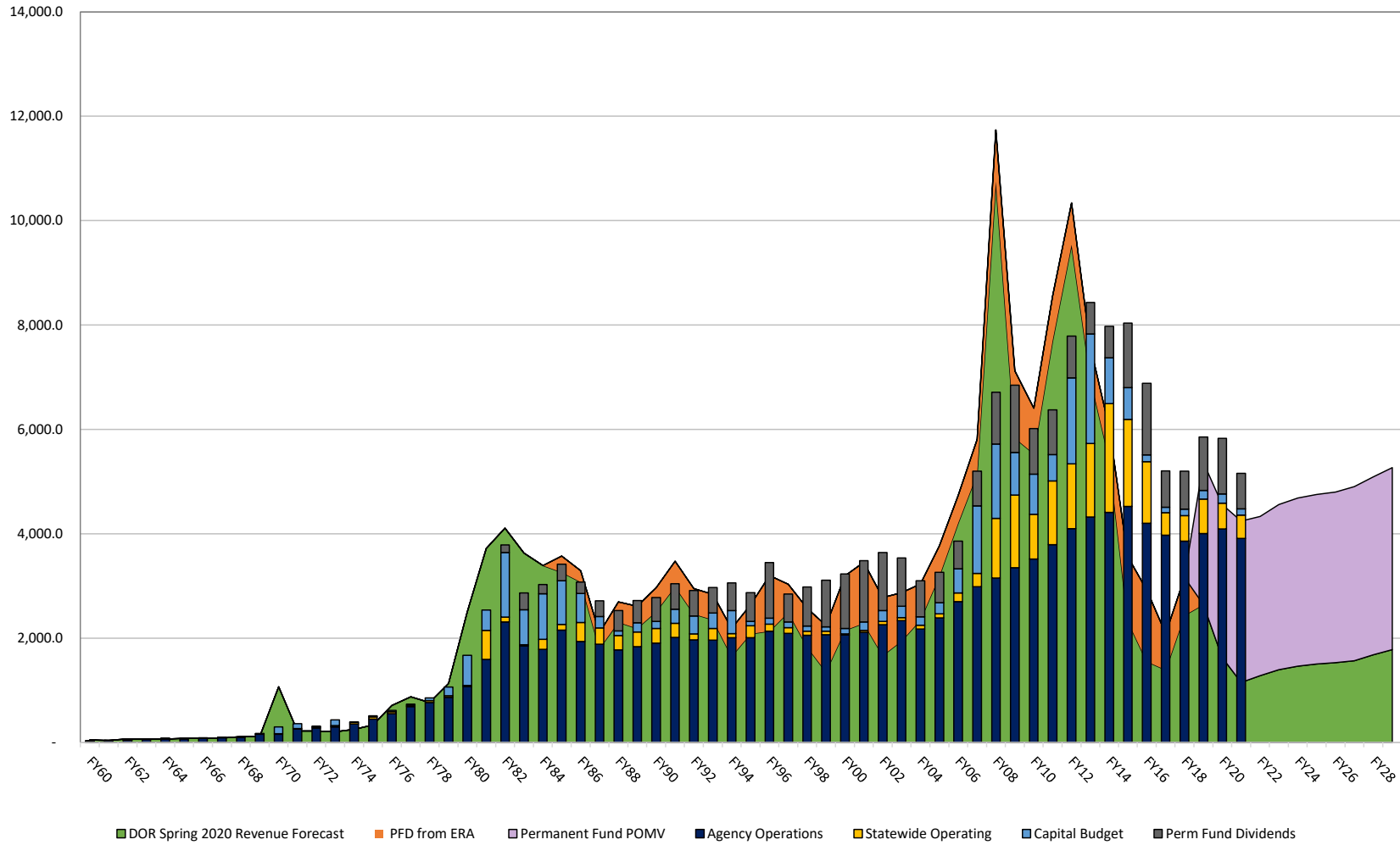


Unrestricted General Fund Revenue / Budget History (millions)

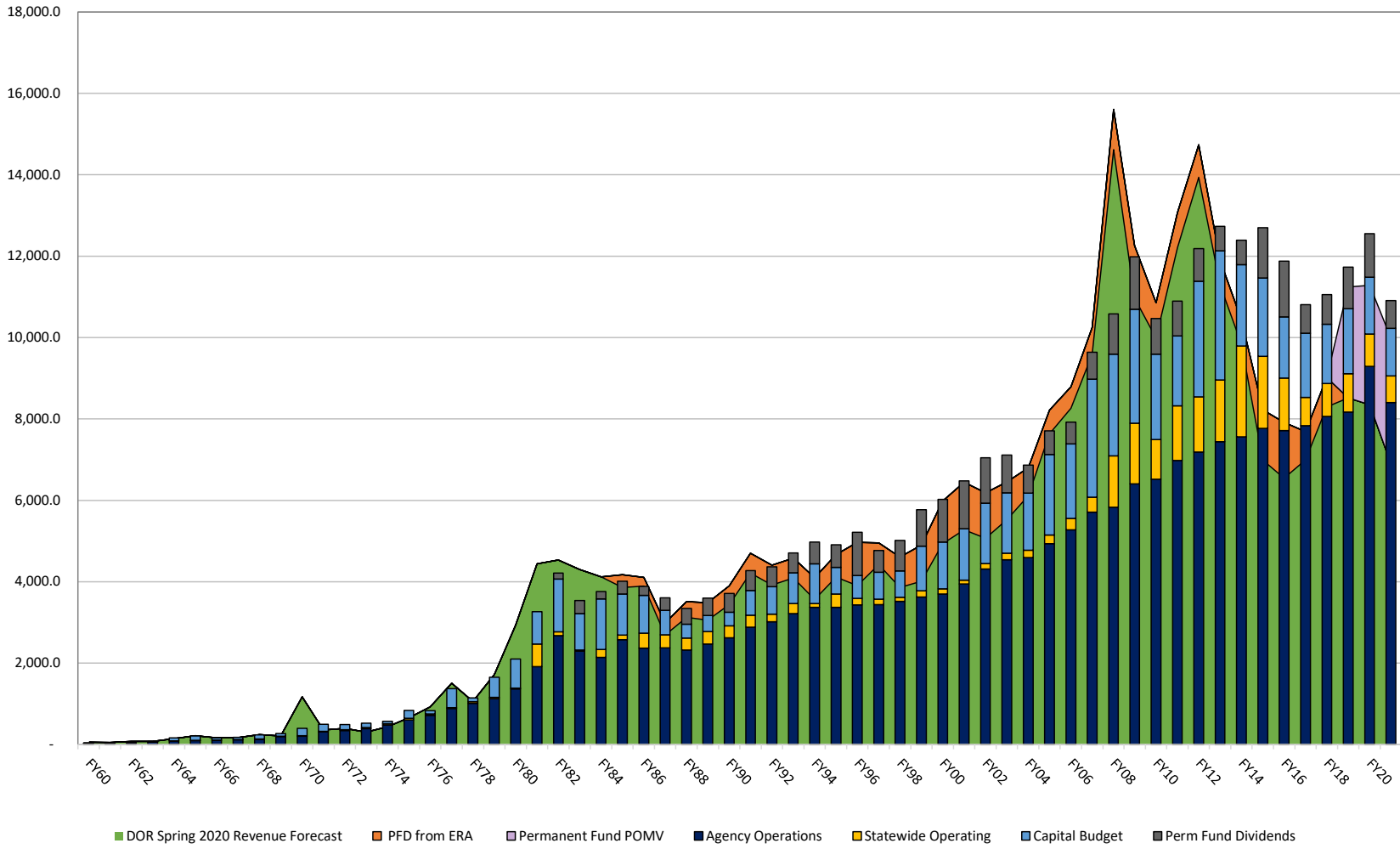


Unrestricted General Fund Revenue / Budget History (millions)

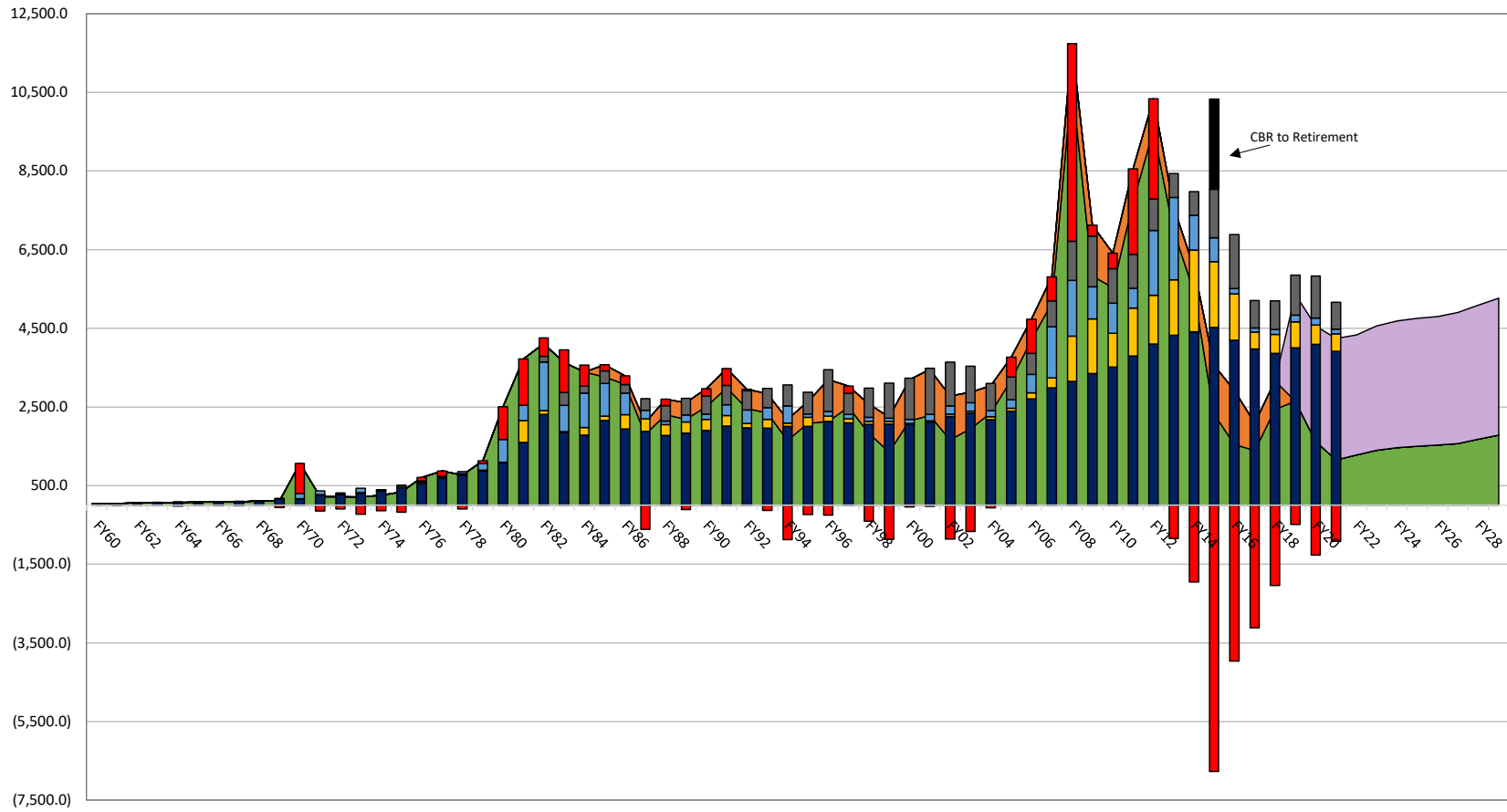


All Funds Revenue / Budget History

All Non-duplicated funds
(millions)



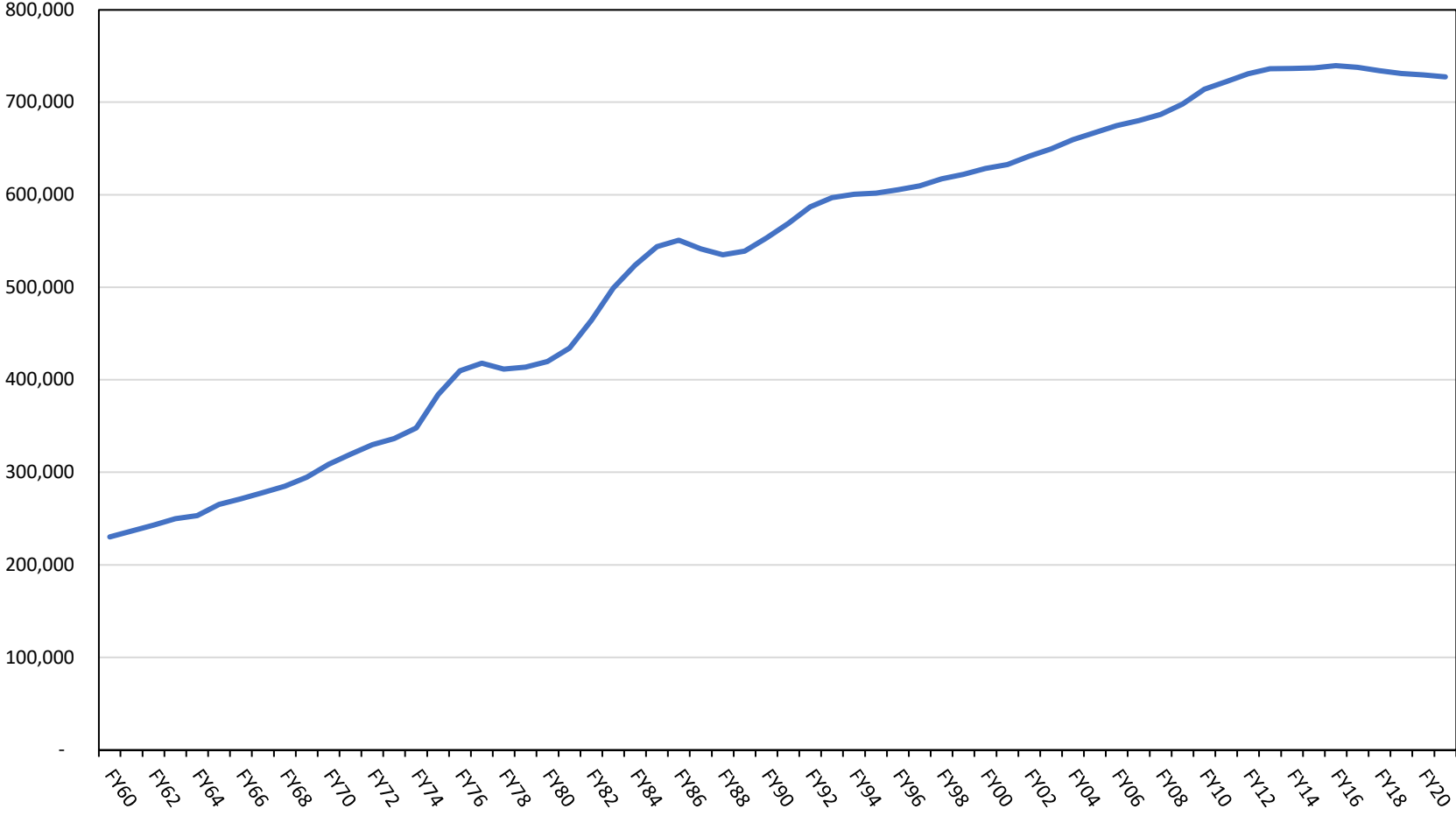
Unrestricted General Fund Revenue / Budget History (millions)



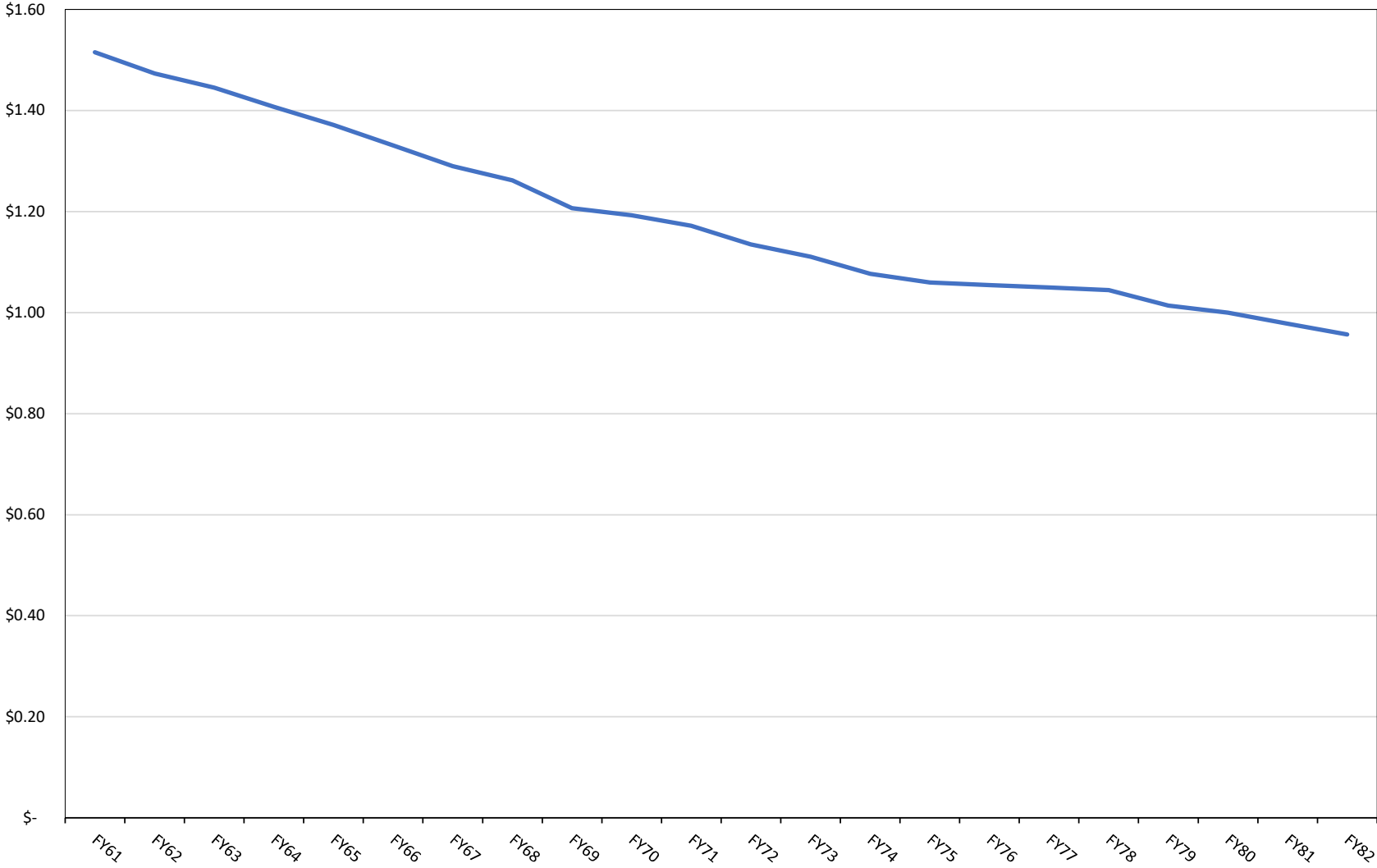
■ DOR Spring 2020 Revenue Forecast
 ■ PFD from ERA
 ■ Permanent Fund POMV
 ■ Agency Operations
 ■ Statewide Operating
 ■ Capital Budget
 ■ Perm Fund Dividends
 ■ Net Fund Transfers

Alaska Population

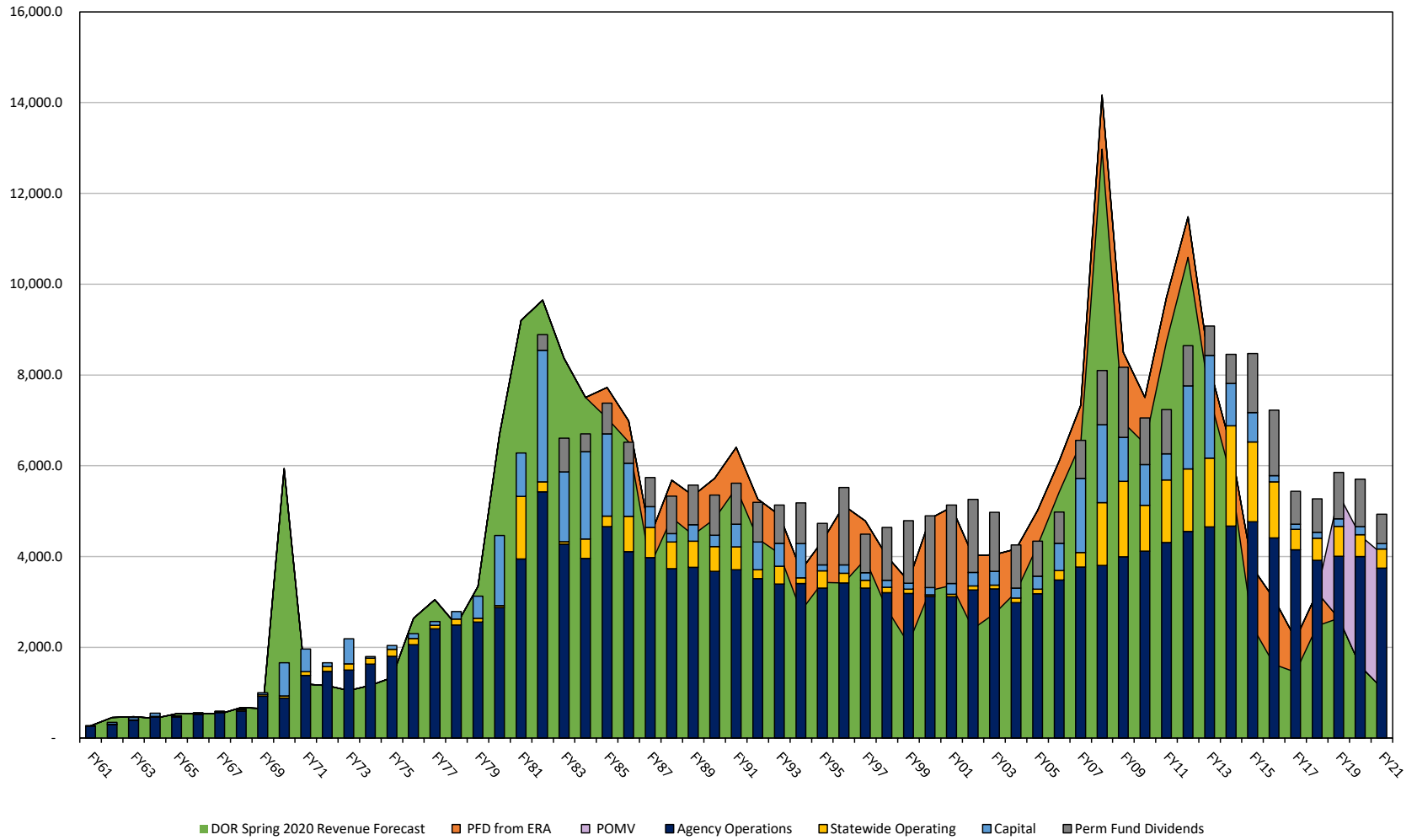
<https://live.laborstats.alaska.gov/pop/>



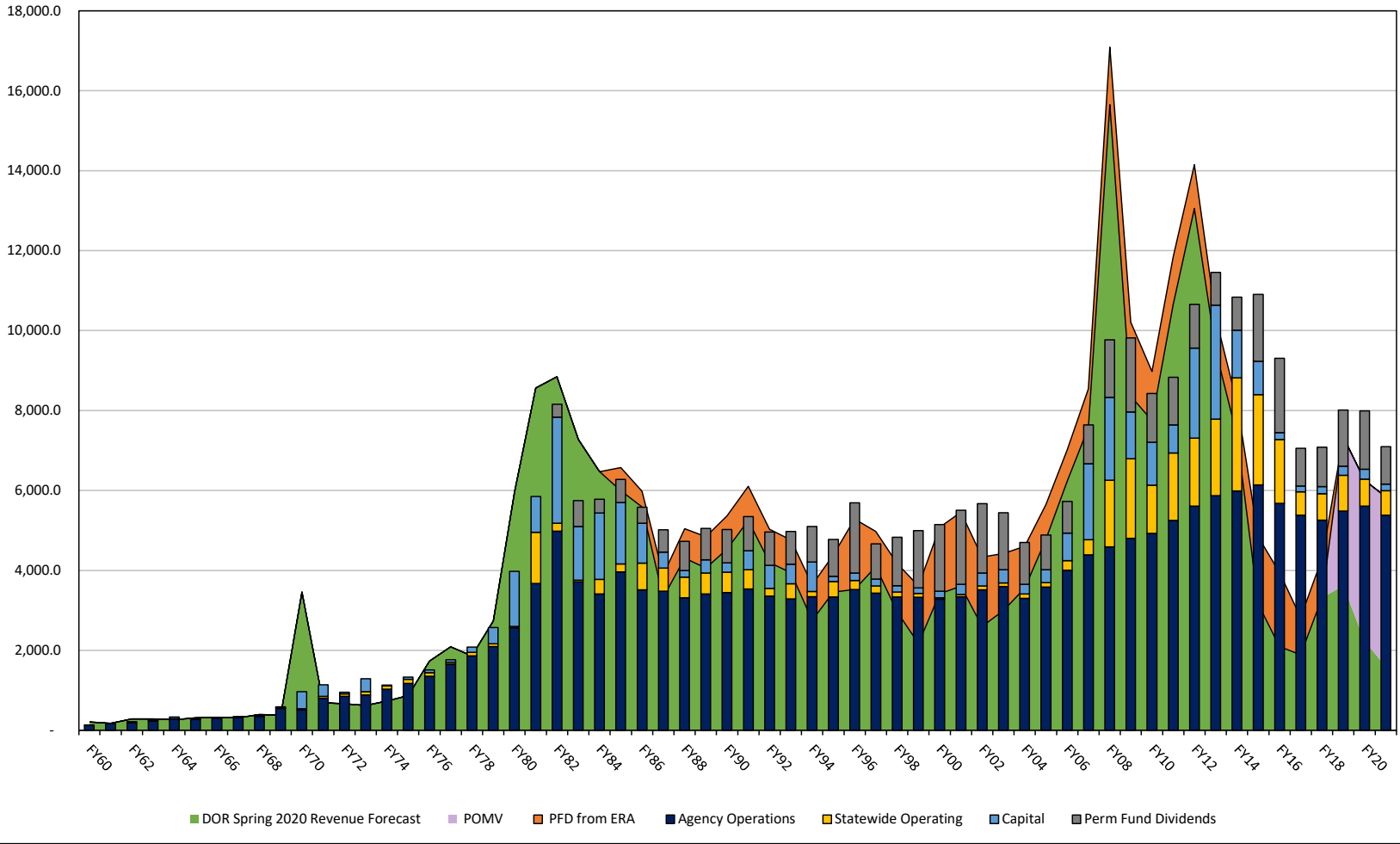
**Alaska Inflation 1961-2021:
Value of One Historical Dollar in 2020 Dollars**



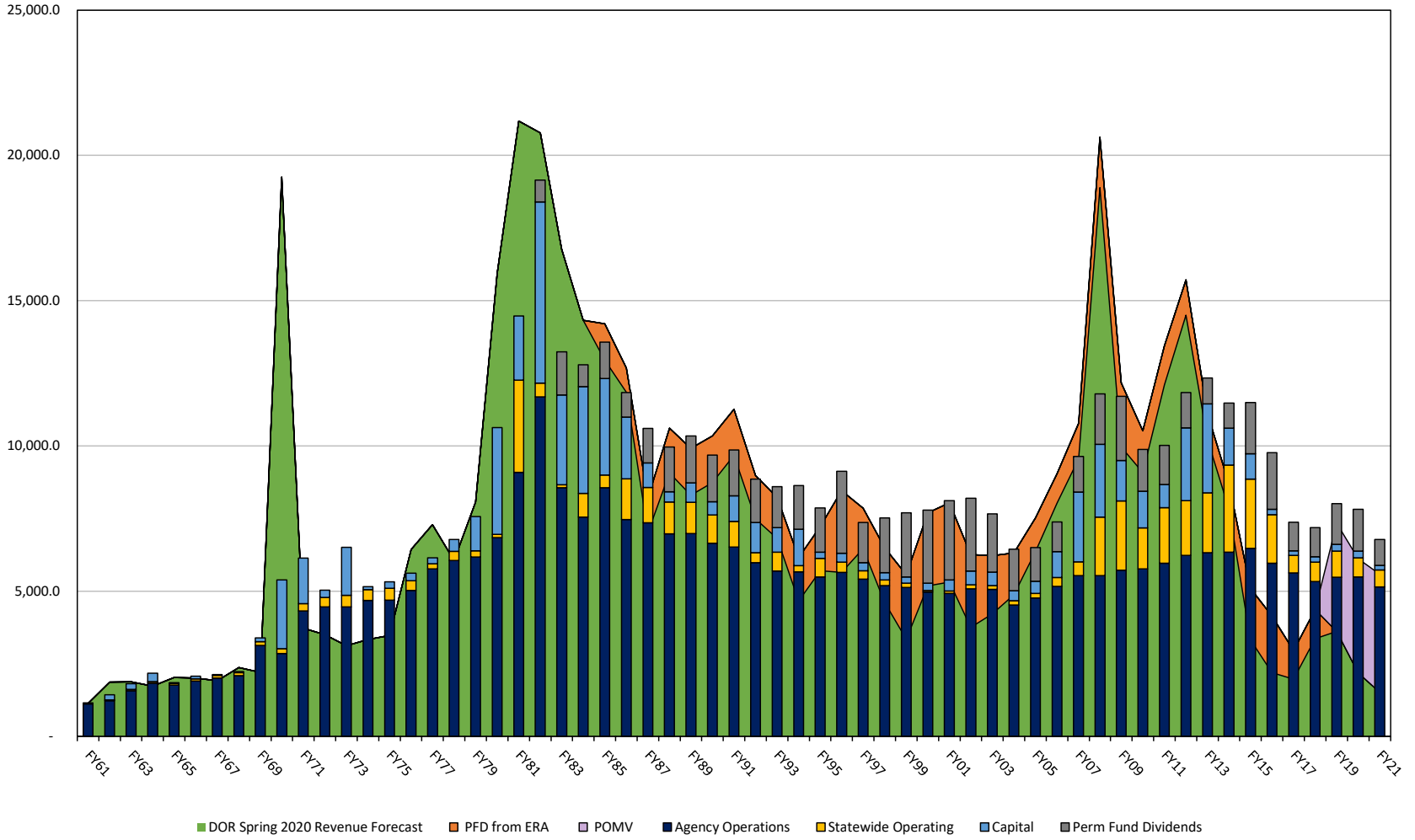
Real Unrestricted General Fund Revenue / Budget History
 Adjusted for Inflation (2020 dollars)
 (millions)



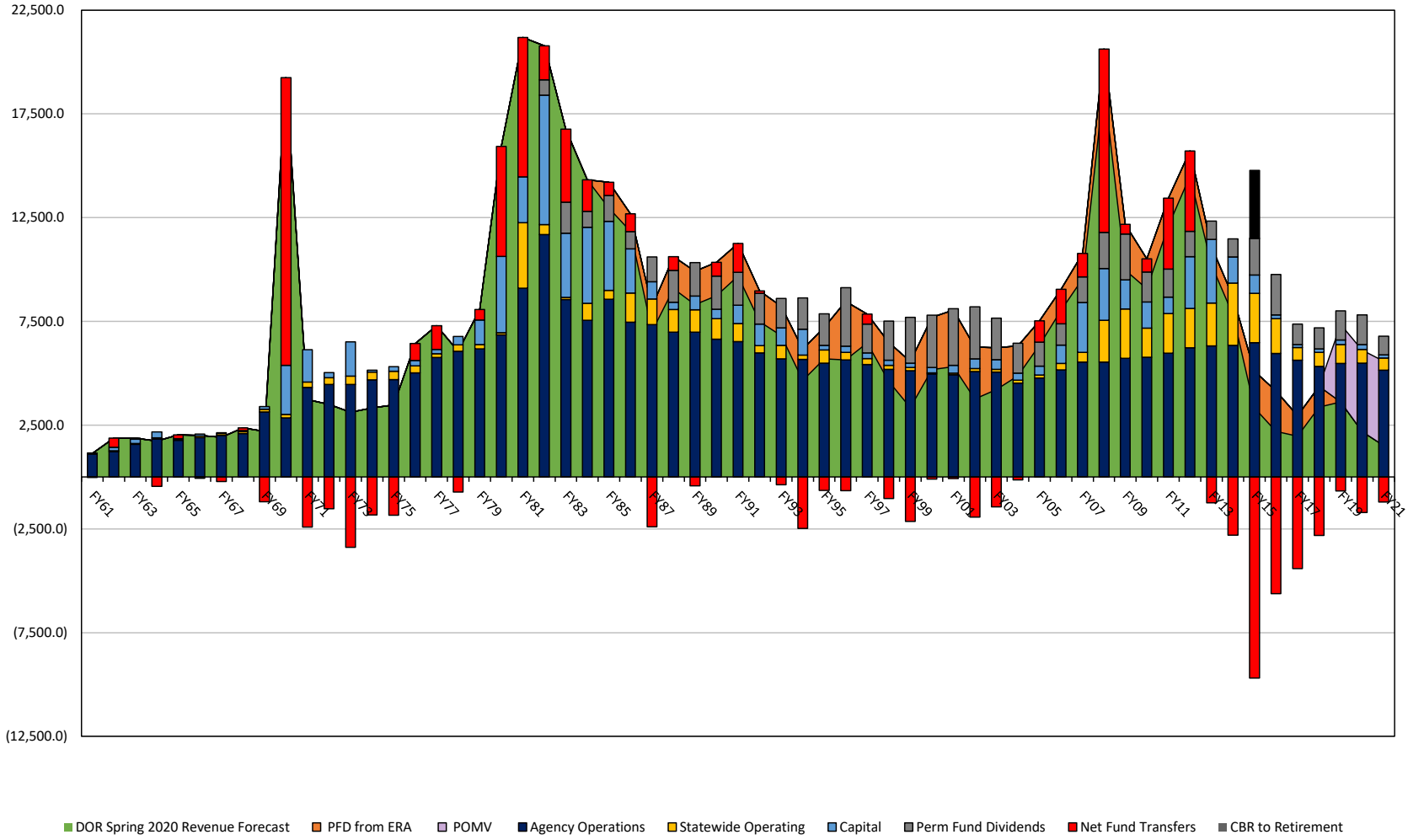
Per Capita Unrestricted General Fund Revenue / Budget History
(millions)



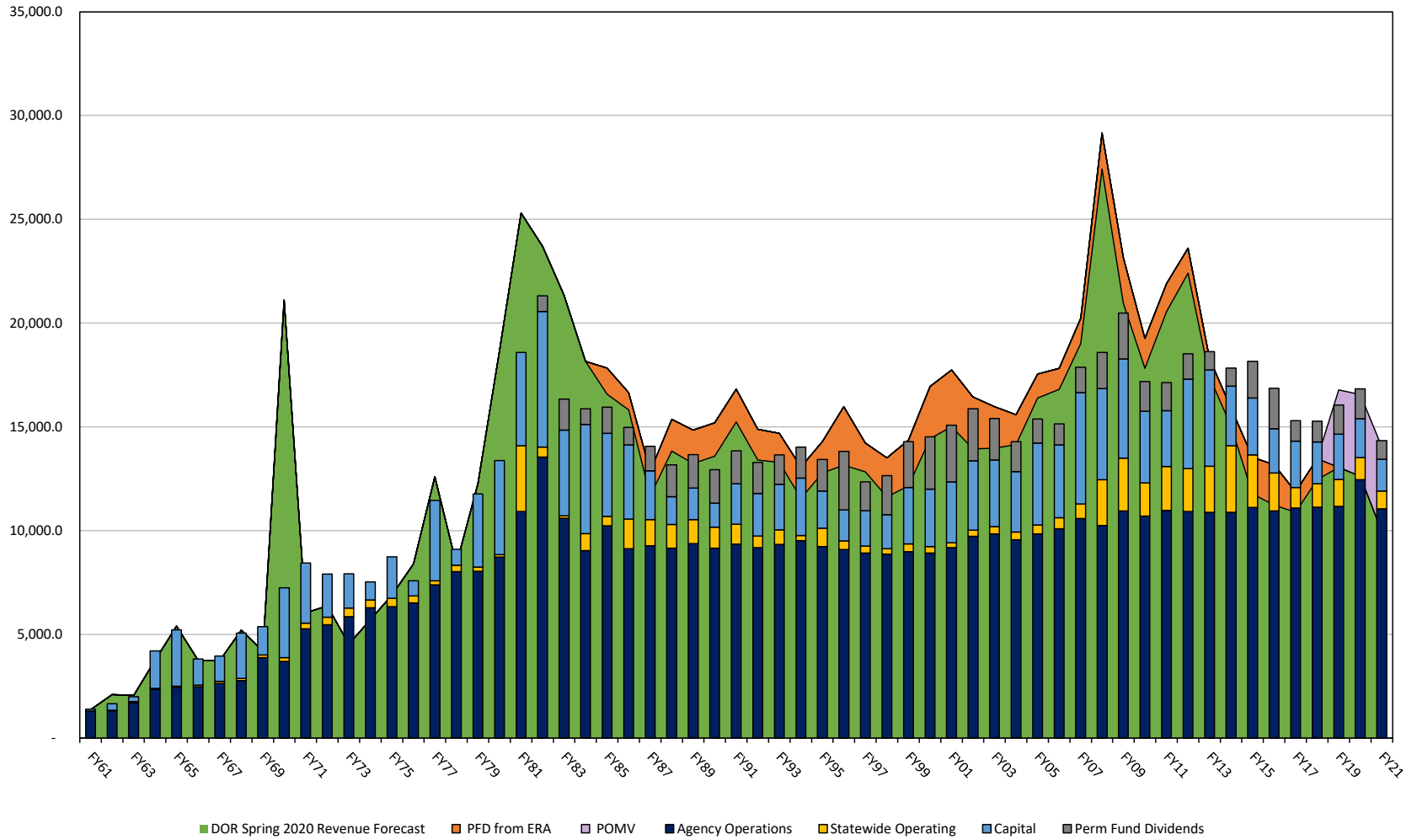
Real Per Capita Unrestricted General Fund Revenue / Budget History
 Adjusted for Inflation (2020 dollars)
 (millions)



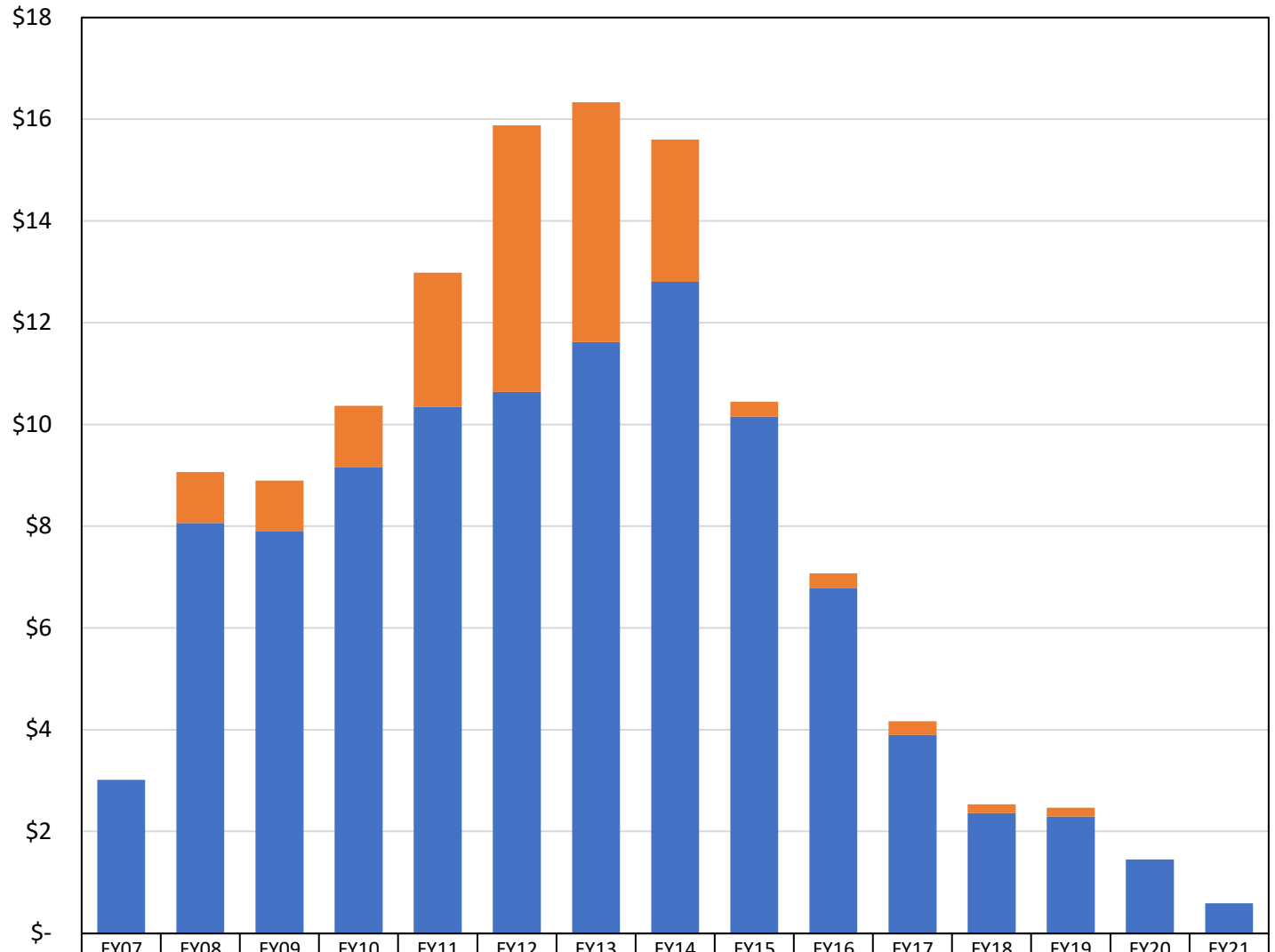
Real Per Capita Unrestricted General Fund Revenue / Budget History
 Adjusted for Inflation (2020 dollars)
 (millions)



All Funds Real Per Capita Revenue / Budget History
 Adjusted for Inflation (2020 dollars)
 All nonduplicated funds
 (millions)



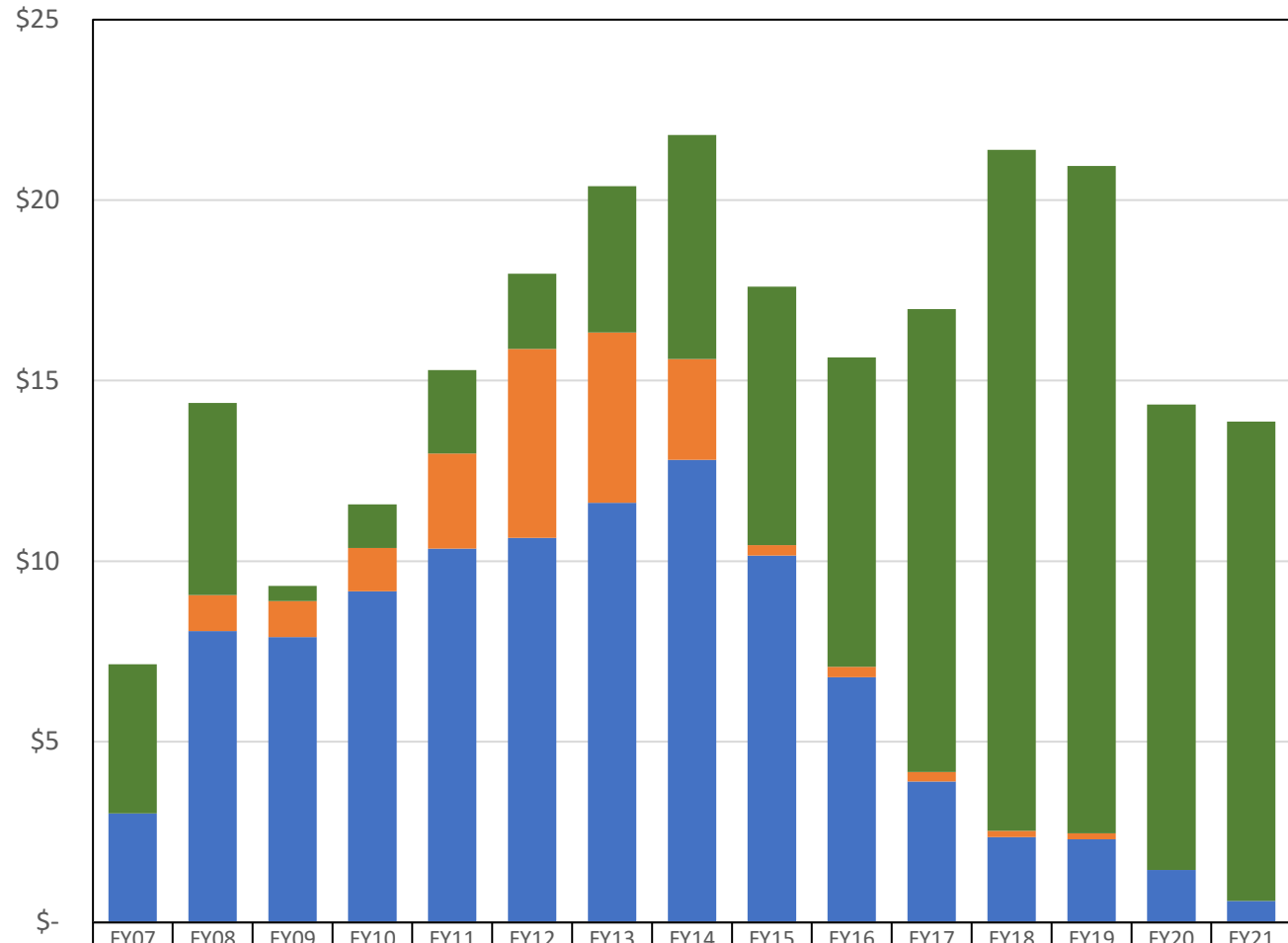
End-of-Year Reserves Balances (billions)



■ Statutory Budget Reserve Fund (SBR)	-	1.00	1.00	1.20	2.63	5.24	4.71	2.79	0.29	0.29	0.27	0.17	0.17	-	-
■ Constitutional Budget Reserve Fund (CBR)	3.02	8.06	7.90	9.17	10.35	10.64	11.62	12.81	10.15	6.79	3.90	2.36	2.29	1.45	0.59

End-of-Year Reserves Balances

(billions)



■ Earnings Reserve Account (ERA)	4.1	5.3	0.4	1.2	2.3	2.1	4.1	6.2	7.2	8.6	12.8	18.9	18.5	12.9	13.3
■ Statutory Budget Reserve Fund (SBR)	-	1.00	1.00	1.20	2.63	5.24	4.71	2.79	0.29	0.29	0.27	0.17	0.17	-	-
■ Constitutional Budget Reserve Fund (CBR)	3.02	8.06	7.90	9.17	10.35	10.64	11.62	12.81	10.15	6.79	3.90	2.36	2.29	1.45	0.59